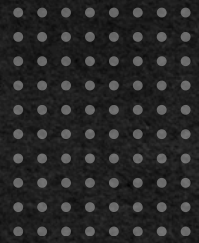


SAFETY *and* **ERGONOMICS**

Solutions focused on eliminating
operational risks and accidents



ABOUT US

AGMOV is a company specializing in the development and manufacture of **products focused on improving and increasing operational safety in various activities and sectors of the economy.**

Designed to offer improved operating conditions, the products are manufactured in accordance with the main technical standards and subjected to strict quality control, ensuring manufacturing excellence.

The team is made up of highly trained professionals with extensive technical experience, which allows **AGMOV** to develop specific solutions for various operations.



PRESENT IN
30+ COUNTRIES



PRESENT IN THE WORLD'S
LARGEST INDUSTRIES

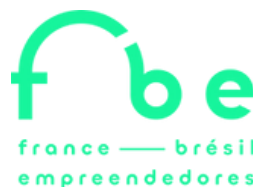


PATENTED
PRODUCTS



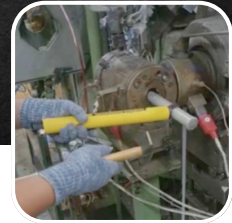
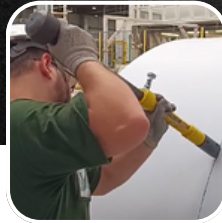
SAFE HANDS
PROGRAM

OUR PARTNERS



ADVANTAGES

The use of tools manufactured for each activity is crucial to the success of any organization. **High-quality tools not only guarantee operational efficiency, but also promote employee safety and satisfaction.**



SAFETY AS A VALUE

AGMOV tools are designed to provide professionals with safe equipment for their operations, offering conditions to mitigate or eliminate risks that could affect their health and safety.



QUALITY AND RELIABILITY

The tools are manufactured to strict quality standards. This ensures that each tool offers consistent, long-lasting performance.



OPERATIONAL EFFICIENCY

Well-designed tools increase productivity. AGMOV tools are manufactured to ergonomic standards, reducing fatigue and physical strain on workers, in accordance with the requirements of ISO 11228-3.



INNOVATION AND TECHNOLOGY

We are constantly investing in research and development to bring innovations to the market. Our tools incorporate the latest technologies to provide superior performance and ease of use.



TECHNICAL SUPPORT AND TRAINING

We offer comprehensive technical support and training programs to ensure that your team knows how to use the tools efficiently and safely. Our commitment to after-sales guarantees ongoing support to maximize the value of your investments.



CUSTOMIZATION AND TAILOR-MADE SOLUTIONS

We understand that every organization has unique needs. We offer customized solutions to meet the specific requirements of your business, ensuring that you have the right tools for every task.



COST-EFFECTIVE

Investing in quality tools is an investment in the longevity and efficiency of your operation. Our tools are designed to last, offering an excellent return on investment through less replacement and maintenance.

ACCIDENTS TO HANDS AND FINGERS

MAIN CAUSES

- **INSECURE BEHAVIOR**
(Negligence, Malpractice and Imprudence)
- **IMPROVISED TOOLS**
- **AVERSION TO CHANGE**
(with manual activities).



CHANGE OF CULTURE

Together with our clients, we implement **programs to promote and develop a culture of prevention in operational activities.**



Safe Hands Program



Zero Improvised Tools



Safe distance from suspended load



Through the application of AGMOV products, we are able to offer organizations **a great opportunity to eliminate risks and raise awareness of existing hazards and their controls.**

PARTNERS

Organizations that
trust our work



Novelis

ICL

raízen



ArcelorMittal

framatome

WestRock



VILLARES METALS
a voestalpine company

SAINT-GOBAIN



AIRBUS



HERINGER



CODELCO

GUARDIAN®
GLASS



GERDAU

3M

Tenaris

CATERPILLAR

INDEX

07 - Guiding Sticks

16 - Accessories for Guiding Sticks

19 - Supports

20 - Smart Hammer

25 - Stick Salvadores

28 - Heavy Vehicle Chocks

30 - Ergonomic equipment



GUIDING STICKS

The AGMOV Guiding Stick has been developed **to provide operators of load handling equipment with greater safety** by ensuring that they keep a safe distance from the load, outside its radius of action.



MAIN SECTORS OF USE



Pulp and Paper



Oil and Gas



Petrochemicals



Mining



Steel industry



Logistics



Railway



Ports



Agriculture



Automotive



Articulated Smart



The Smart Articulated Stick **has been designed to be used in suspended load operations.** Its innovative design features a pin locking system, allowing the length to be adjusted according to the requirements of the activities and to adapt to operators of different statures, meeting the diversity of anthropometric standards. It also offers practical storage and can be adjusted to approximately 50% of its total length, contributing to housekeeping and 5S programs.

AVAILABLE SIZES

1,00m / 39.3"
Cód.: 1.02.0584

1,50m / 59 "
Cód.: 1.02.0805

2,00m / 78.7 "
Cód.: 1.02.0545

3,00m / 118.1"
Cód.: 1.02.0487

4,00m / 157.4"
Cód.: 1.02.0608

5,00m / 196.8"
Cód.: 1.02.0921



Fixed Rod Smart



The Fixed Rod Smart Guiding Stick is a light and sturdy piece of equipment **designed for positioning hoisted loads where the employee needs to use greater force.** It has a fixed length and the tip can be easily connected using push pins, ensuring a firm connection during use.

AVAILABLE SIZES

0,50m / 19.6"
Cód.: 1.01.0785

0,75m / 29.5"
Cód.: 1.01.0809

1,00m / 39.3"
Cód.: 1.01.0796

1,25m / 49.2"
Cód.: 1.01.1378

1,50m / 59"
Cód.: 1.01.0797

1,75m / 68.8"
Cód.: 1.01.1379

2,00m / 78.7"
Cód.: 1.01.0818

2,50m / 98.4"
Cód.: 1.01.1380

3,00m / 118.1"
Cód.: 1.01.0798

3,50m / 137.7"
Cód.: 1.01.1381

4,00m / 157.4"
Cód.: 1.01.1247



ON/OFF CG



The AGMOV On/Off Guiding Stick is designed to direct loads safely, eliminating the risk of being pressed or cut while moving the load. **This model works with a permanent neodymium magnet and a trigger, which makes it easier to disconnect the pole from the load.** The magnet's force of attraction is 40 kgf. This model is suitable for working with loads up to a temperature of 80°C.

Length not hinged*

AVAILABLE SIZES

0,50m / 19.6"
Cód.: 1.03.0394

0,75m / 29.5"
Cód.: 1.03.0913

1,00m / 39.3"
Cód.: 1.03.0562

1,25m / 49.2"
Cód.: 1.03.0323

1,50m / 59"
Cód.: 1.03.0565

1,75m / 68.8"
Cód.: 1.03.1617

2,00m / 78.7"
Cód.: 1.03.0563

2,50m / 98.4"
Cód.: 1.03.1597

3,00m / 118.1"
Cód.: 1.03.0768

3,50m / 137.7"
Cód.: 1.03.1618

4,00m / 157.4"
Cód.: 1.03.0830

**PATENTED
PRODUCT**
Cód.: 1.03.0610



ON/OFF CG High Temperature



Developed to operate with loads on hotter surfaces, the ON/OFF CG High Temperature **can be connected to loads with temperatures of up to 120°C, maintaining its efficiency and functionality.**

Length not hinged*

AVAILABLE SIZES

0,50m / 19.6"
Cód.: 1.03.2472

0,75m / 29.5"
Cód.: 1.03.1799

1,00m / 39.3"
Cód.: 1.03.1816

1,20m / 47.2"
Cód.: 1.03.1596

1,50m / 59"
Cód.: 1.03.1801

2,00m / 78.7"
Cód.: 1.03.2110

2,50m / 98.4"
Cód.: 1.03.2473

3,00m / 118.1"
Cód.: 1.03.2123

3,50m / 137.7"
Cód.: 1.03.2474

4,00m / 157.4"
Cód.: 1.03.2475

5,00m / 196.8"
Cód.: 1.03.2476

**PATENTED
PRODUCT**



OffShore




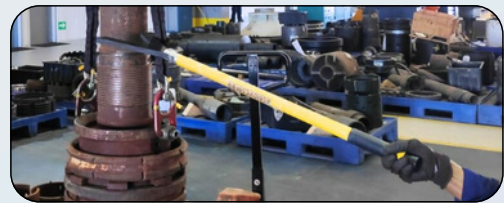
The Offshore Stick has been specially **designed to meet the needs of the Oil & Gas sector. From extraction to refining, it is essential for ensuring the safety of "HandsFree" operations, eliminating the risk of accidents to workers hands and fingers.** Available in alloy fiber or aluminum, materials known for their high strength, lightness and durability, the stick is ideal for withstanding the adverse conditions common in this industrial environment.

Its end has a V-shaped tip, made from high-quality PP, which interacts with various types of loads and surfaces without causing scratches or damage. It has rubberized handles, ergonomically designed to provide optimum grip, comfort and safety during use. Ideal for guiding containers, suitcases, moving hoses and drilling tools, pulling ropes and guiding palletized loads.

AVAILABLE SIZES

Fibre Tube

1,00m / 39.3" Cód.: 1.05.1044	1,20m / 47.2" Cód.: 1.05.0799	1,50m / 59" Cód.: 1.05.1123
1,80 m / 70.8" Cód.: 1.05.0794	2,30 m / 90.5" Cód.: 1.05.0800	 PATENTED PRODUCT



Aluminium Tube

0,50m / 19.6" Cód.: 1.05.0819	0,75m / 29.5" Cód.: 1.05.1612	1,00m / 39.3" Cód.: 1.05.0820	1,20m / 47.2" Cód.: 1.05.0802	1,50m / 59" Cód.: 1.05.0910	1,80 m / 70.8" Cód.: 1.05.0801
2,00m / 78.7" Cód.: 1.05.1613	2,50m / 98.4" Cód.: 1.05.0803	3,00m / 118.1" Cód.: 1.05.1614	3,50m / 137.7" Cód.: 1.05.1615	4,00m / 157.4" Cód.: 1.05.1616	


OffShore CG High Temperature



The CG High Temperature Offshore Stick was **developed as a variation of the OffShore Stick to meet the needs of other industry sectors, such as steel, metallurgy, mining, among others.** Its V-shaped tip is made of high-strength aluminum, as is its body, making it ideal for more demanding operations in environments with temperatures of up to 300°C.

Cast aluminum Head



1,00m / 39.3" Cód.: 1.05.2958	1,25m / 49.2" Cód.: 1.05.2960	1,50m / 59" Cód.: 1.05.2961	2,00m / 78.7" Cód.: 1.05.2962
2,30m / 90.5" Cód.: 1.05.2963	3,00m / 118.1" Cód.: 1.05.2964	 PATENTED PRODUCT	

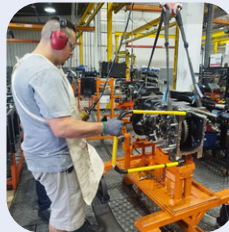
U ON/OFF

AGMOV's U On/Off Guiding Stick has been developed to **safely direct the load, facilitating fine-tuning and eliminating possible pressing and cutting of limbs.** This model works with two permanent and articulated neodymium magnets, as well as two triggers that make it easy to disconnect the pole from the load.

AVAILABLE SIZES

Length not hinged*

380x380mm Cód.: 1.11.0633	500x250mm Cód.: 1.11.1730
500x350mm Cód.: 1.11.0706	500x900mm Cód.: 1.11.0479
750x250mm Cód.: 1.11.1765	1000x250mm Cód.: 1.11.1735
1000x400mm Cód.: 1.11.1796	1500x1000mm Cód.: 1.11.1776



U ARTICULATED ON/OFF - CG SMART

AGMOV's U On/Off CG Smart Guiding Stick is designed to safely direct the load, **eliminating possible pinching and cutting of limbs.** This model has two permanent neodymium magnets and two triggers, which make it easier to disconnect the pole from the load.

AVAILABLE SIZES

Articulated length*

500x380 / 530mm Cód.: 1.11.1731	500x500 / 750mm Cód.: 1.11.1732	500x750 / 1000mm Cód.: 1.11.1733
500x910 / 1470mm Cód.: 1.11.1734	750x380 / 530mm Cód.: 1.11.1766	750x500 / 750mm Cód.: 1.11.1767
750x750 / 1000mm Cód.: 1.11.1768	750x910 / 1470mm Cód.: 1.11.1769	1000x910 / 1470mm Cód.: 1.11.1739
1000x380 / 530mm Cód.: 1.11.1736	1000x500 / 750mm Cód.: 1.11.1737	1000x750 / 1000mm Cód.: 1.11.1738



Opening Adjustment

U ARTICULATED SMART

The Smart Articulated U Stick is designed for situations where fine adjustment is crucial. Its **design includes two support points at the ends, allowing it to be attached to the load and directed in all necessary directions.**

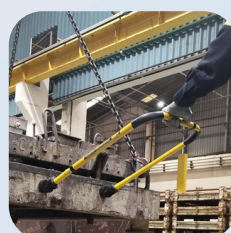
Its body has quick-release pins that allow the opening and width of the pole to be adjusted. It is ideal for maintenance activities such as fitting flanges to studs, directing workpieces in lathe chucks and handling circular or cylindrical parts.

*Heads not included.

AVAILABLE SIZES

Articulated length*

250x380mm / 530mm Cód.: 1.11.1443	250x500mm / 750mm Cód.: 1.11.1444	250x750mm / 1000mm Cód.: 1.11.1445
250x910mm / 1470mm Cód.: 1.11.1446	500x380x530mm Cód.: 1.11.1448	500x500mm / 750mm Cód.: 1.11.1449
500x750mm / 1000mm Cód.: 1.11.1450	500x910mm / 1470mm Cód.: 1.11.1451	1000x380mm / 530mm Cód.: 1.11.1453
1000x500mm / 750mm Cód.: 1.11.1454	1000x750mm / 1000mm Cód.: 1.11.1455	1000x910mm / 1470mm Cód.: 1.11.1456



Opening Regulation

Bag Cutter



The AGMOV Bag Cutter Stick **has been developed to allow the operator to maintain a safe distance from the BAG's radius of action, making it possible to tear or puncture it safely.** In addition, the stick allows the operator to move away from any projections of particles stored inside the BAG. The stick has a blade at its end, encased in a protective cover, and a trigger so that it can be activated during the activity.

AVAILABLE SIZES

0,50m / 19.6" Cód: 1.06.1051	0,75m / 29.5" Cód: 1.06.1609	1,00m / 39.3" Cód: 1.06.1085	1,25m / 49.2" Cód: 1.06.0488
1,50m / 59" Cód: 1.06.0536	1,75m / 68.8" Cód: 1.06.0590	2,00m / 78.7" Cód: 1.06.0539	2,50m / 98.4" Cód: 1.06.0609
3,00m / 118.1" Cód: 1.06.1048	3,50m / 137.7" Cód: 1.06.1610	4,00m / 157.4" Cód: 1.06.1611	




NEW BAG CUTTER



The New Bag Cutter Stick is designed to get the operator out from under the bag, preventing them from being exposed to the "line of fire". Using the Bag Hole Stick you can cut through the bottom of the bag without exposing yourself to unnecessary risks. *Also use the "Vertical Handle" accessory (cod: 271), for models over 1.5 meters, for even more comfort and ergonomics.

*Use the "Vertical Handle" accessory (code: 1.31.0271) **for models over 5.0 ft (1,5 m)** even more comfort and ergonomics.

1,00m / 39.3" Cód: 1.06.0479	1,25m / 49.2" Cód: 1.06.0480	1,50m / 59" Cód: 1.06.0481	1,75m / 68.8" Cód: 1.06.0482
2,00m / 78.7" Cód: 1.06.0483	2,50m / 98.4" Cód: 1.06.0484	3,00m / 118.1" Cód: 1.06.0485	3,50m / 137.7" Cód: 1.06.0486
4,00m / 157.4" Cód: 1.06.0487			




Claw Pipe Griper



The Claw Pipe Griper Stick has been carefully **designed to handle tube-shaped loads precisely, thanks to its efficient clamping system.** Equipped with an adjustable, serrated shank, it provides greater grip on the surface, allowing the tool to be adjusted to the diameter of the workpieces. With a reach of 3 to 10 inches, the rod ensures that the load is firmly accommodated in its arc, which is coated with high-resistance rubber to optimize the coefficient of friction. Ideal for guiding pipes, hoses, drilling tools, cylindrical parts and other similar applications.

AVAILABLE SIZES

1,00m / 39.3" Cód: 1.08.0824	1,50m / 59" Cód: 1.08.0826	2,00m / 78.7" Cód: 1.08.2274
2,50m / 98.4" Cód: 1.08.0827	3,00m / 118.1" Cód: 1.08.2273	




Tweezer HD

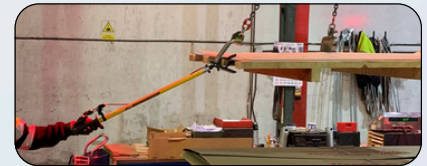


The HD Tweezer is designed to provide hand safety during activities that require gripping or clamping parts, loads and other components. Its gripper, made of carbon steel and coated with rubberized material, allows for the handling of tools on the ground, the extraction of metal bolts from wells, the collection of samples on production lines, and even the handling of bags on forklift forks. In short, it is an indispensable tool for any task that requires a pinching motion.

Note: For lengths of more than 1.50m, the use of the Vertical Handle accessory is recommended to provide more control, comfort and safety during activities.

AVAILABLE SIZES

0,50m / 19.6" Cód: 1.04.0872	0,75m / 29.5" Cód: 1.04.0873	1,00m / 39.3" Cód: 1.04.0860	1,25m / 49.2" Cód: 1.04.0874
1,50m / 59" Cód: 1.04.0875	1,75m / 68.8" Cód: 1.04.0876	2,00m / 78.7" Cód: 1.04.0877	2,50m / 98.4" Cód: 1.04.0878
3,00m / 118.1" Cód: 1.04.0879	3,50m / 137.7" Cód: 1.04.0880	4,00m / 157.4" Cód: 1.04.0881	 PATENTED PRODUCT




Tweezer HD COMFORT



The COMFORT HD Tweezer Stick has been developed to offer comfort and safety, especially in vertical applications or at angles of up to 45°. Its design provides ideal support for the hands and wrists, making it easier to pick up parts or tools from the ground, providing an ergonomic and efficient experience during activities.

Note: For lengths of more than 1.50m, it is recommended to use the Vertical Handle accessory to bring more control, comfort and safety to the activity.

AVAILABLE SIZES

0,50m / 19.6" Cód: 1.04.1489	0,75m / 29.5" Cód: 1.04.1490	1,00m / 39.3" Cód: 1.04.1491	1,25m / 49.2" Cód: 1.04.1492
1,50m / 59" Cód: 1.04.1493	1,75m / 68.8" Cód: 1.04.1494	2,00m / 78.7" Cód: 1.04.1495	2,50m / 98.4" Cód: 1.04.1496
3,00m / 118.1" Cód: 1.04.1497	3,50m / 137.7" Cód: 1.04.1498	4,00m / 157.4" Cód: 1.04.1499	 PATENTED PRODUCT




Aluminum Tweezer

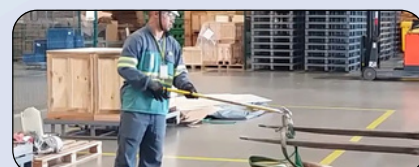


The AGMOV Aluminum Tweezer Stick has been developed to meet the demands of high-precision industrial operations. Equipped with a carefully designed clamp, it is ideal for positioning Big Bag strap, attaching polyester straps to the load and also for directing or removing lifting devices from the load, guaranteeing efficiency and safety in operations.

Note: For lengths over 1.50m, the use of the Vertical Handle accessory is recommended to bring more control, comfort and safety to the activity.

AVAILABLE SIZES

0,50m / 19.6" Cód: 1.04.0314	0,75m / 29.5" Cód: 1.04.0731	1,00m / 39.3" Cód: 1.04.0268	1,25m / 49.2" Cód: 1.04.0901
1,50m / 59" Cód: 1.04.0257	1,75m / 68.8" Cód: 1.04.1052	2,00m / 78.7" Cód: 1.04.0393	2,50m / 98.4" Cód: 1.04.0266
3,00m / 118.1" Cód: 1.04.0317	3,50m / 137.7" Cód: 1.04.0473	4,00m / 157.4" Cód: 1.04.0886	 PATENTED PRODUCT



Spray Holder



The Spray Stick was developed to facilitate the application of aerosol substances in hard-to-reach areas, whether for lubrication or painting, minimizing direct exposure to chemical substances. Especially suitable for work at height, such as lubricating cables on overhead cranes, painting surfaces in high places and other similar applications.

AVAILABLE SIZES

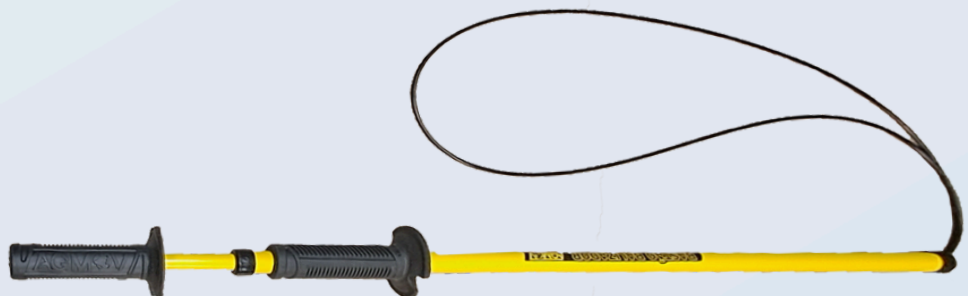
1,00m / 39.3"
Cód: 1.12.1681

3,00m / 118.1"
Cód: 1.12.2694

5,00m / 196.8"
Cód: 1.12.2729



Knot



Designed to facilitate the handling of circular or cylindrical loads such as pipes, poles and shackles. **The knot Stick** is ideal for situations where there are no anchor points available or when the parts are made of non-magnetic materials such as stainless steel and manganese. Made of steel rope, with numerous wires to offer flexibility and resistance to deformation, the Loop is coated to protect both its structure and the surface of the load. It is easily adjusted by opening or closing the pole, allowing the rope to be adjusted as necessary to wrap the load securely.

AVAILABLE SIZES

0,50m / 19.6"
Cód: 1.10.3164
Ø 100 cm / 39.3"

0,75m / 29.5"
Cód: 1.10.3165
Ø 40 cm / 15.7"

1,00m / 39.3"
Cód: 1.10.3166
Ø 56 cm / 26"

1,25m / 49.2"
Cód: 1.10.3167
Ø 60 cm / 23.6"

1,50m / 59"
Cód: 1.10.3168
Ø 60 cm / 23.6"

1,75m / 68.8"
Cód: 1.10.3169
Ø 100 cm / 39.3"

2,00m / 78.7"
Cód: 1.10.3170
Ø 100 cm / 39.3"

2,50m / 98.4"
Cód: 1.10.3171
Ø 100 cm / 39.3"

3,00m / 118.1"
Cód: 1.10.3172
Ø 100 cm / 39.3"

3,50m / 137.7"
Cód: 1.10.3173
Ø 100 cm / 39.3"

4,00m / 157.4"
Cód: 1.10.3174
Ø 100 cm / 39.3"



Truck Unloader



The Bulk Truck Stick is designed to make it easier to open and close bulk truck lids. With a design that fits perfectly around the edges of the lid, it provides a safe and controlled support point for efficient movement. Its special geometry on the tip prevents the lid from slipping during the opening or closing process. In addition, it includes the Vertical Handle, which not only improves comfort and ergonomics, but also provides an additional support point to make the task easier.

AVAILABLE SIZES

0,50m / 19.6"
Cód: 1.07.3094

0,75m / 29.5"
Cód: 1.07.1807

1,00m / 39.3"
Cód: 1.07.1808



1,25m / 49.2"
Cód: 1.07.1809

1,50m / 59"
Cód: 1.07.1810

1,75m / 68.8"
Cód: 1.07.3095

2,00m / 78.7"
Cód: 1.07.0634

2,50m / 98.4"
Cód: 1.07.3096

3,00m / 118.1"
Cód: 1.07.3097



Vertical handle included



Automatic Suction



The Automatic Suction was designed to facilitate the handling of parts with smooth and flat surfaces, such as glass and steel sheets. Equipped with a suction cup with high suction capacity, it can support loads of up to 100 kg. To attach the suction cup to the load, simply position it on the desired surface, apply light pressure and press the button about 4 times to ensure adequate adherence.

AVAILABLE SIZES

0,50m / 19.6"
Cód: 1.09.0098

0,75m / 29.5"
Cód: 1.09.0099

1,00m / 39.3"
Cód: 1.09.0100



1,25m / 49.2"
Cód: 1.09.0101

1,50m / 59"
Cód: 1.09.0102

1,75m / 68.8"
Cód: 1.09.0103

2,00m / 78.7"
Cód: 1.09.0104

2,50 m / 98.4"
Cód: 1.09.0105

3,00 m / 118"
Cód: 1.09.0106

3,50 m / 137"
Cód: 1.09.0107

4,00 m / 157"
Cód: 1.09.0108



ACCESSORIES FOR GUIDING STICKS

The accessories for sticks play a fundamental role in the performance of activities, **including different types of heads designed to enhance the user's experience when using the poles.**

In addition, we have various models of holders, ensuring that the poles are stored correctly and properly when not in use.



Heads



OffShore
Code: 1.35.0635



U Magnetic Articulated
Code: 1.35.1812



Double J
Code: 1.35.1026



Head VF
Code: 1.35.0705



Head V
Code: 1.35.0592



Head C
Code: 1.35.0636



Head T
Code: 1.35.0642



Head U
Code: 1.35.1684



Head N
Code: 1.35.0629



Head J
Code: 1.35.0639



Head G
Code: 1.35.0578



Head F
Code: 1.35.0599



Magnetic with Articulator
Code: 1.35.0888



Cargo Tip Load Head
Code: 1.35.2227
Tie not included



Spatula Head
Code: 1.35.1797



Vertical Handle

The Vertical Handle is an accessory developed to provide an additional support point in the Ballast Bastions. Its design aims to improve ergonomics during various tasks, increasing efficiency to the force applied. Equipped with a rubberized handle, it can be installed in any position that is most comfortable for the operator.

Guiding Stick

Tube 1"
Code: 1.31.0271



Sticks OffShore

Tube 1.1/4"
Code: 1.31.1155



SUPPORT FOR GUIDING STICKS

Support

With the Housekeeping and 5S policies in mind, AGMOV has developed the Support, **whose purpose is to store the Guiding Sticks in an appropriate, safe and organized way.** It can be available next to each workstation, making it easier for employees to access the tools.

With a high-quality metal structure, the pole has a lock and a hole for use with a padlock. It is attached to the rack by means of an individual support, equipped with a magnet on its surface, ensuring a secure connection.

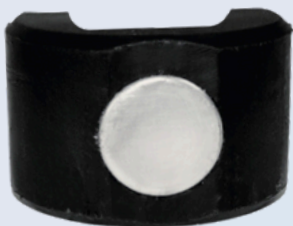
***Individual Support purchase required**

Code: 1.31.2955



Individual Support

The Individual Support is a snap-on clamp made of polypropylene, equipped with a neodymium magnet on the contact surface. **Ideal for storing guiding stick on metal surfaces such as beams, columns and plates,** this accessory can be easily removed and installed on new beacon poles as they are replaced.



Individual Magnetic
1" - Code: 1.31.2985

Individual Magnetic
1.1/4" - Code: 1.31.2986

Individual Magnetic
7/8" Code: 1.31 .2987

SMART HAMMER

The AGMOV Smart Hammer is a tool designed for impact activities, **eliminating the use of conventional sledgehammers and hammers, as well as the risks inherent in these tasks.**

It consists of a robust hand-operated piston that transmits the force generated by its displacement in the form of a robust, frontal and concentrated impact. At its lower end, where there is contact with the surface to be struck, it is possible to adapt different tips for each type of operation, such as: chisels, pin pullers, wrenches, among others.

Note: It also has an anti-reflective system, which prevents the force generated from returning to the employee's hands, avoiding vibrations and dry knocks.



HANDS AWAY FROM THE IMPACT



PRECISE AND SAFE STROKES



ERGONOMICS IN EXECUTION OF ACTIVITIES



REDUCES THE RISK OF PARTICLE PROJECTION



DESIGNED FOR AMBIDEXTERITY



ANTI-SPARK OPTION

MAIN SECTORS OF USE



Pulp and Paper



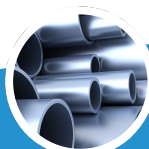
Oil & Gas



Petrochemical



Mining



Steel industry



Logistics



Railway



Naval Industry



Agriculture



Automotive



SINGLE MODELS

No head included



Mini
Code: 1.30. 1111



Small
Code: 1.301110



Medium
Code: 1.30 0871



Big
Code: 1.30.0970



HEADS INTERCHANGEABLE



**HEAD
PIN PULLER**

Code: 1.37.0882
Mini: 1.37.1116



**HEAD
CHISEL**

Code: 1.37.0883
Mini: 1.37.1114



**HEAD
HAMMER**

Code: 1.37.1300
Mini: 1.37.1183



**HEAD
WRENCH**

Code: 1.37.0983
Mini: 1.37.1115



Special line for hazardous areas, development of **spark-resistant Cup head**

APPROXIMATE IMPACT FORCE

SMART HAMMER + WEIGHT

Model	Weight	Weight + Cup Head	Weight + Wrench Head
MINI	2,00 Kg / 4.4 Lbf	x	x
SMALL	7,35 Kg / 16.2 Lbf	Weight 1,5 Kg / 3.3 Lb = 18,0 Kg / 38.6Lb	Weight 3,0 Kg / 6.6 Lb = 29,5 Kg / 65 Lb
MEDIUM	21,0 Kg / 46.2 Lbf	Weight 1,5 Kg / 3.3 Lb = 33,0 Kg / 72.7 Lb	Weight 3,0 Kg / 6.6 Lb = 45,0 Kg / 99.2 Lb
BIG	36,5 Kg / 80.4 Lbf	Weight 1,5 Kg / 3.3 Lb = 49,5 Kg / 109.1 Lb	Weight 3,0 Kg / 6.6 Lb = 61,5 Kg / 135.5 Lb

KIT SMART HAMMER



Mini
Code kit: 1.30.1119



Small
Code Kit: 1.30.1318



Medium 590 mm / 23.2 Inch
Code Kit: 1.30.0988



Big 820 mm / 32.2 Inch
Code Kit: 1.30.0989



Included in all Kits	Mini: 1.37.1116 S M B: 1.37.0882	Mini: 1.37.1114 S M B: 1.37.0883	Mini: 1.37.1115 S M B: 1.37.0983	Mini: 1.37.1183 S M B: 1.37.1300	Mini: 1.37.1112 S M B: 1.37.0992	Mini: 1.37.1113 S M B: 1.37.993	Mini: 1.37.1154 S M B: 1.37.1652
----------------------	-------------------------------------	-------------------------------------	-------------------------------------	-------------------------------------	-------------------------------------	------------------------------------	-------------------------------------

THE KIT CONTAINS:



Smart Hammer (1 unity)

- 1 Allen Key (1 unit)
- 2 Pin Puller (1 unit)
- 3 Chiesel Head (1 unit)
- 4 Wrench Head (1 unit)
- 5 Hammer Head (1 unit)
- 6 Additional Weight 1,5kg / 3.3 Lb (1 unit)
- 7 Additional Weight 3,0Kg / 6.6Lb (1 unit)
- 8 Vertical Handle (1 unit)

Eco-packaging

ACCESSORIES FOR SMART HAMMER

The Vertical Handle is an accessory designed to provide an additional support point for Smart Hammers. **Its purpose is to improve ergonomics during various tasks** by increasing efficiency when directing the force applied.



VERTICAL HANDLE

Smart hammer S/M/B

Tube 1
Code: 1.31.0271



ADDITIONAL WEIGHT

Increase in impact force, proportionally **with weights of**
0.5kg / 1.1 Lb | 1.5kg / 3.3 Lb | 3.0kg / 6.6 Lb



0,5 kg / 1.1 Lb

Code: 1.37.1112 (mini)

1,5 kg / 3.3 Lb

Code Mini: 1.37.1113

Code S/M/B: 1.37.0992

3,0 kg / 6.6 Lb

Code S/M/B: 1.37.0993



STICK SALVADORES

AGMOV Salvadores Sticks have been **developed to protect operators' hands, avoiding exposure to the risk of impact when using tools such as chisels, bits and punches, among others.** With this stick, the operator's hand remains outside the impact zone of the tool being used, ensuring greater safety during activities.



HANDS AWAY FROM THE IMPACT



ERGONOMICS IN EXECUTION OF ACTIVITIES



REDUCES THE RISK OF ACCIDENTS AND PROJECTION OF PARTICLES OR COMPONENTS

MAIN SECTORS OF USE



Pulp and Paper



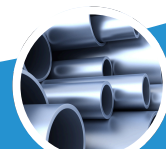
Oil & Gas



Petrochemical



Mining



Steel industry



Logistic



Railway



Naval Industry



Agriculture

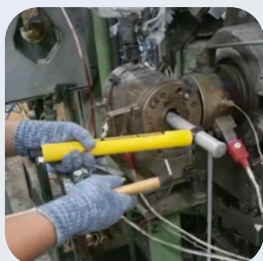


Automotive



SALVADOR STANDARD

The Standard Salvador is a tool **designed to reduce the risk of accidents when using sledgehammers, hammers, chisels, pointers and the like.** This device holds the tool to be struck, keeping hands away from the impact zone for greater safety. The tools are easily attached to the Savior by means of a high-strength elastic cord equipped with an eyebolt at its end.



AVAILABLE SIZES

300 mm / 11.5 Inch

Code: 1.30.0396

375 mm / 14.7 Inch

Code: 1.30.0224

600 mm / 23.6 Inch

Code: 1.30.0340

850 mm / 33.4 Inch

Code: 1.30.0337



SALVADOR PUNCH STAMP AUTOMATIC

The Salvador Automatic Punch Holder is the **ideal tool for activities involving punches, alphanumeric type and pin punches.** It has a 15 mm hole where the punch or numeric type is inserted and held firmly by friction. During the punch, the operator's fingers remain away and protected from the impact zone, ensuring greater safety.



AVAILABLE SIZES

300 mm / 11.5 Inch

Code: 1.30.0341



PUNCH STAMP

The Punch Stamp has been **designed to minimize the risk of fingers being pressed during operations that involve striking punches and numeric types with mallets and hammers.** With a 15 mm hole in its end and an internal magnet that attaches the punch or numeric type to the stick, it ensures that the operator's fingers remain protected and away from the impact zone when the punch is struck.



AVAILABLE SIZES

300 mm / 11.5 Inch
Code: 1.30.0333



NAIL HOLDER

In order to reduce the risk of hitting your fingers when hammering nails, AGMOV has developed the Nail Holder Savior. **This device keeps the operator's hand and fingers away from the nail, even when positioning it for the first impact when it is still 'loose'.** The Nail Holder Savior has a magnetic shank with a groove, ensuring that nails fit securely and efficiently. It is ideal for construction work, joinery, shipping areas for closing boxes, among other applications.

Note: It can not be used as a lever to open boxes.



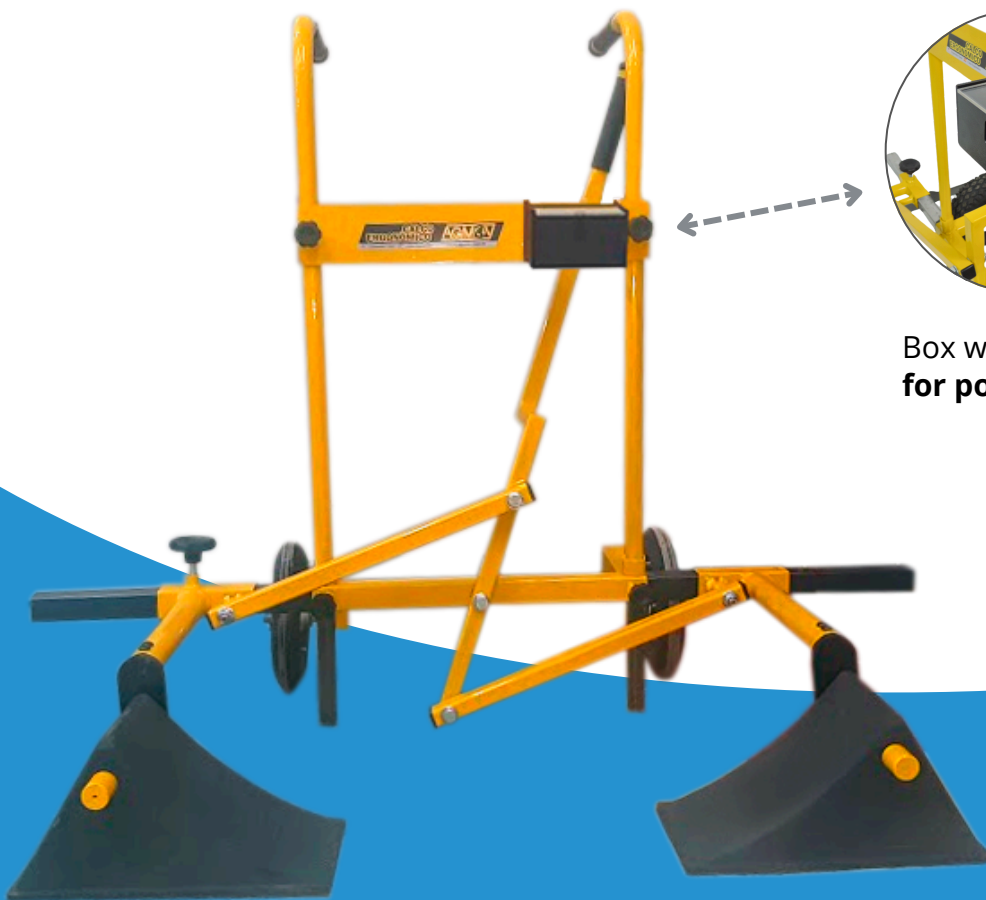
AVAILABLE SIZES

300 mm / 11.5 Inch
Code: 1.30.1227



CHOCK FOR HEAVY VEHICLES

Taking into account ergonomic and accident risks and the regulatory standards in force, AGMOV has **developed a range of Ergonomic Chocks**, which are sized according to the characteristics of each type of heavy vehicle or load.



Box with padlock
for power lock



ERGONOMICS IN
EXECUTION OF
ACTIVITIES



PREVENTS
ACCIDENTAL
OPERATION

ERGONOMIC CHOCK HD

The AGMOV Ergonomic Chock HD **has been developed to chock cargo vehicles ergonomically and safely.** With it, the operator can position and adjust the chocks while standing, eliminating the risks associated with poor posture and running over injuries. The chock also has a locking box compatible with the LOTO system, ensuring that the vehicle is chocked and locked, preventing accidental or intentional shifting.

AVAILABLE SIZES

Code: 1.30.1859



ERGONOMIC TRACTOR CHOCK

Essential in **environments where large machinery undergoes maintenance, such as workshops and yards,** the Ergonomic Tractor Chock plays a vital role. It not only chocks vehicles, but also blocks their energy, preventing accidental or unauthorized movement.

AVAILABLE SIZES

Code: 1.30.1803

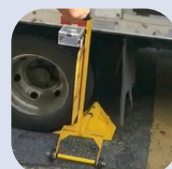


COMPACT CHOCK

The Compact Chock **has been developed to support loading vehicles without putting the operator at risk of ergonomic injury or wheel-related accidents.** Its design allows the operator to position it upright, making it perfect for areas with restricted space or for quick loading and unloading operations. In addition, it is equipped with a locking box compatible with the LOTO system.

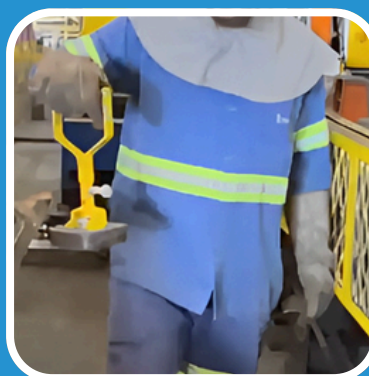
AVAILABLE SIZES

Code: 1.30.1096



ERGONOMIC EQUIPMENT

At AGMOV, we have a **department dedicated exclusively to developing ergonomic solutions**, made up of experienced and renowned professionals in the field of Ergonomics and Projects. This has allowed us to create tools for a variety of purposes, with the aim of making the working environment safer, more ergonomic and more comfortable for workers.





STRETCH FILM STICK

The **Stretch Film Stick** allows professionals to apply film to both the bottom and top of the load in a safe and ergonomic way. With specific areas for positioning the hands and a length adjustment for the rod, the tool can be adapted to each operator's best posture, providing an ideal position while carrying out the task.

AVAILABLE SIZES

Cód: 1.12.2185



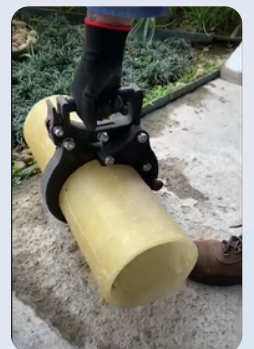
PAC HAND



The **Pac Hand** has been designed to provide safe and ergonomic conditions for professionals who need to manually transport cylindrical parts in a horizontal position. These parts can be solid or tubes made from a variety of materials, such as plastic, steel, aluminum, copper, among others. The Pac Hand offers a precise hold on the load, protecting employees' hands from cuts and crushing, guaranteeing safe and efficient handling.

AVAILABLE SIZES

6" Cód: 1.33.1273



MANUAL MAGNETIC LIFTER



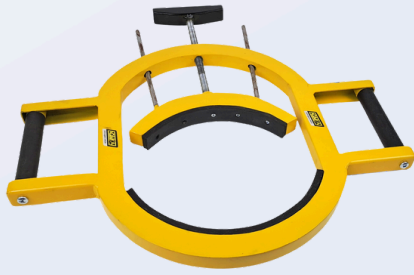
The **Manual Magnetic Lifter** has been developed to carry loads manually. The device reduces the risk of cuts and pressures by offering an anatomical and comfortable handle, a pin to release the movement of the central axis and a neodymium magnet for fixing to metal surfaces. To release the magnet from the load, simply apply a lever movement with the aid of its base. This device is ideal for maintenance areas, boilermaking and for moving sheet metal cut-outs, pins and various parts.

AVAILABLE SIZES

Cód: 1.33.1362



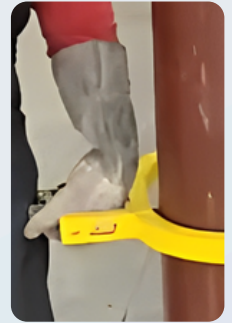
ERGONOMIC CILINDRER GRABBER



The **Ergonomic Cylinder Grabber** is the perfect choice for manually transporting gas cylinders. Its ergonomic design guarantees safety and comfort, minimizing effort and reducing the risk of accidents. As well as increasing work efficiency, it protects employees' health. This device is suitable for cylinders with diameters ranging from 6" to 10".

AVAILABLE SIZES

Regulável 6" a 10"
Cód: 1.33.3008



GRAB TUBE HANDLE



The **Grab Tube Handle** was developed to provide comfort and safety when manually moving PVC, steel, aluminum, copper and other material pipes. It is widely used in agricultural activities, especially fertigation. This tool eliminates the risk of accidents to hands and fingers, improper posture and limb pinching. By fitting perfectly into the inner radius of the pipes, its geometry keeps the pipes firmly together during use, guaranteeing high performance and productivity for the worker.

AVAILABLE SIZES

Tubo 4"

Cód: 1.30. 2470

Tubo 6"

Cód: 1.30. 2471

Tubo 8"

Cód: 1.30. 2046

Tubo 10"

Cód: 1.30.1854

Tubo 12"

Cód: 1.30.1864



PIPE TONG

The **Pipe Tong** is the perfect tool for positioning and fitting pipes safely and ergonomically. With this tool, workers can carry out their tasks without having to stoop, eliminating risks and exposure to inappropriate postures. It also prevents hands from coming into direct contact with the pipes, reducing the risk of accidents such as cuts and crushing. Essential for fertigation operations and other similar activities.

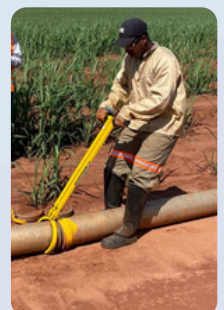
Diâmetro

6" Cód:1.33.2081

8" Cód: 1.33.2149

10" Cód: 1.33.2150

12" Cód:1.33. 2151





ERGONOMIC LEVER

The **Ergonomic Lever** is designed to lift loads off the ground, such as metal and concrete manhole covers, guard rails, grates and similar objects, with a maximum weight of up to 180 kg. Its design includes a hook at the end for attaching accessories such as chain slings and a magnetic lifter. With this tool, workers can perform the task from a safe distance, in an ergonomic way, avoiding inappropriate postures and the need to apply excessive force.

REFERENCE CODE

Cód: 1.33.0746



ERGONOMIC LEVER FOR CONNECTING PIPES

The **Ergonomic Pipe Connection Lever** has been developed to make fertigation operations easier by making pipe connection and disconnection more ergonomic and safer. It has a curved handle at one end, designed to fit the pipes and make them easier to move.

AVAILABLE SIZE

Cód: 1.33. 3155



STICK COLLECTOR ERGONOMIC

The **Collector Stick** is a tool designed to efficiently pick up objects from the ground. Especially useful in fruit picking, it prevents workers from having to stoop down and pick up objects repeatedly during their work. Its operation is simple and intuitive: simply move the spherical tip over the objects to be collected, which are then picked up and stored. A rod at the end of the stick allows the arms to be opened so that the collected objects or fruit can be dispensed into the appropriate container.

AVAILABLE SIZES

1,70 mts
Cód: 1.33.3058





Ergonomic and Safety

2092, Manifesto Street - Zip Code: 04209-002
Ipiranga - São Paulo - Brazil
+55 (11) 4329-0956 | +55 (11) 95758-1002
office@agmovgroup.com | www.agmovgroup.com

FOLLOW IN **SOCIAL MEDIA**

